

USER MANUAL

Model: ET-7A-AU(W)

Programmable Radiant Floor Thermostat

● Installation

1. Loosen the bottom screw by a Phillips screwdriver, then open the thermostat from the below as shown.

Note: You do not need to unscrew the screw completely.

2. Wire as shown:

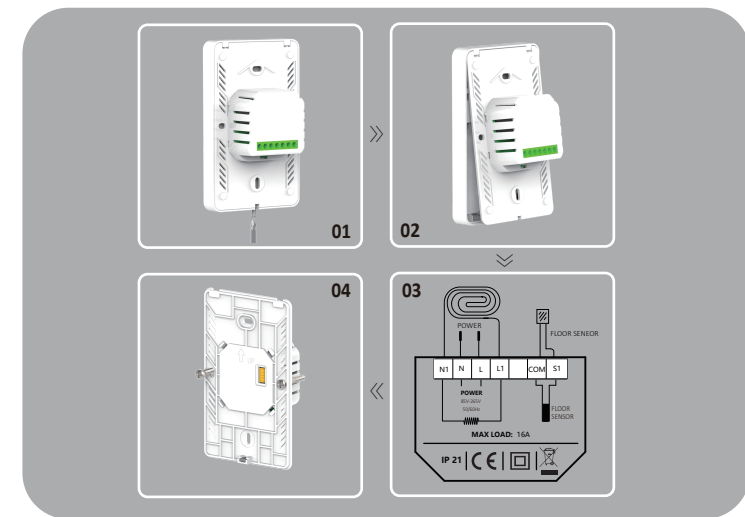
L/N lead : Connect the power cord using the terminal block.

L1/N1 lead : Use a terminal block to connect the load line.

S1/COM1 : Connect the floor sensor.

Note: Disconnect the main power supply before wiring.

3. Install the back cover into the terminal box and secure it with the set screw.



● WARNINGS

To avoid risk of electric shock, disconnect all power coming to heater at main service panel before installing the thermostat. Keep thermostat air vents clean and free from obstructions. All wiring must conform to local and national electrical codes and ordinances. Installation must be carried out by qualified personnel.

● Classification

The thermostat is a Class II device (reinforced insulation) and used for controlling electrical floor heating. The product must be connected to the following leads:

L/N lead: Connect the power cord using the terminal block.

L1/N1 lead: Use a terminal block to connect the load line(Max 16A).

Note: Electric floor heating cable/mat must be in accordance with the supply voltage. The terminals are designed to handle a cross-section of wire measuring 12-22AWG.

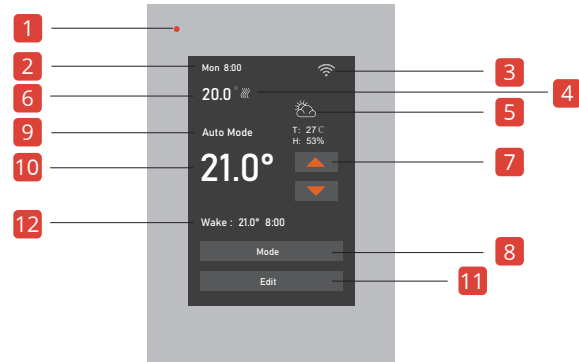
● Technical specification

Supply voltage:	85-265 VAC 50/60 Hz
Load:	max.16 A (resistive load)
Setpoint range:	+5 to +40°C / +41 to +104°F
Temperature range:	+5 to +45°C / +41 to +113°F
Cover:	IP21
WiFi module:	5G+2.4G
Floor sensor type:	NTC B=3950 10k
Temp Tolerance:	default 1°C /2°F

● Instruction

The thermostat controls your floor heating system based on built-in weekly program, running in 4 or 2 stages per day, 7 days a week. The default weekly program parameters satisfies most usage scenarios, however you can also modify the weekly program parameters in the thermostat. When there is no one in the house, it is recommended to set the temperature down to save energy. The thermostat also has built-in adaptive function. When this function acts, the thermostat heats or stops heating in advance of next stage to bring the room temperature to the set temperature of the next stage. Please note that after turning adaptive on, the thermostat takes a few days to learn the time required.

● Functions and operation

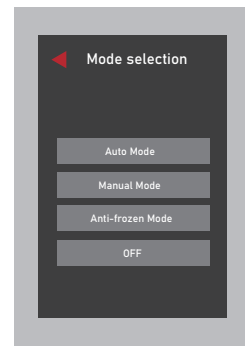


- | | |
|--------------------------|------------------------|
| 1 LED | 2 Time |
| 3 WIFI | 4 Heating |
| 5 Weather | 6 Temperature |
| 7 Up and down regulation | 8 Mode |
| 9 Mode state | 10 Setting temperature |
| 11 Edit | 12 Next Schedule |

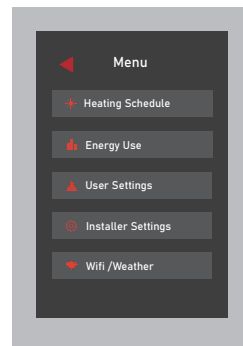
Temporary temperature setting

Please press the button for temporary temperature setting

Mode



Edit



Mode selection

This thermostat provides three operating modes:

Automatic mode:

According to the weekly program, the thermostat automatically adjusts the set temperature operation.

Manual mode:

The thermostat runs continuously according to the set temperature.

Frost protection mode:

This mode is used when you want to keep your room at a lower temperature when you are on vacation.Prevent cold wave, home water supply equipment and other damage. Range is set from 41°F to 59°F(5°C -15°C) in this mode.

OFF:

Manually turn off all functions of the thermostat. When the device needs to be started, Press and hold the on/off button in screen for 3s.

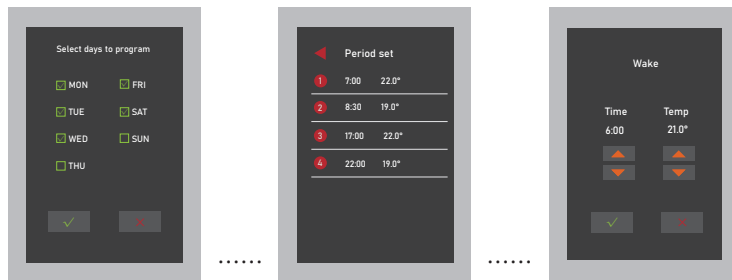
Edit selection

★ Heating Schedule

Assign seven days a week to the following two schedules:

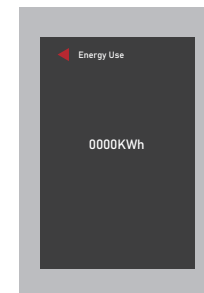
- 5+1+1: The Event parameter is the same from Monday to Friday, with separate Event parameters on Saturday and Sunday.
- 7: With separate Event parameters every day.

Note: Set schedules, the week can be multiple selection, complete batch change.

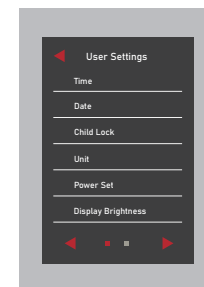


Energy Use

This option is used to calculate data on energy usage.The user sets the power in the Power Set. The thermostat will automatically count the heating time and calculate the energy consumption.



User Settings



Time: Set Time.

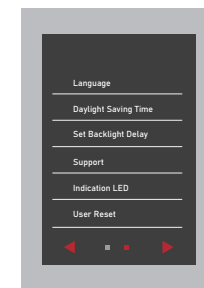
Date: Set date.

Child lock: Lock all keys to prevent the setting from being changed. (Hold on the up button for 3s to unlock)

Unit: °F/°C

Power Set: 0W-4500W

Display Brightness: 1-9.



Language: English/Francais

Daylight Saving Time: When enabled, the thermostat will adjust automatically in daylight saving time.

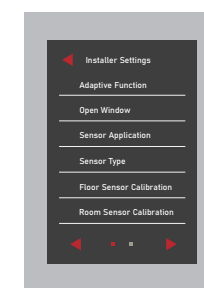
Set Backlight Delay: 5-60

Support: Please refer to the manual.for further support, please contact your installer.

Indication LED: Lets you select whether the LED is on or off.When activated, the LED indicates the heating state at that time.

User Reset: This will reset the users settings to factory default.

Installer Settings



Adaptive Function: When this feature is enabled, the room will have reached the target/set temperature when the event begins.

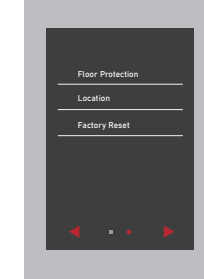
Open Window: Thermostat can detect an open window and will shut off heating temporarily to save energy.

Sensor Application: Floor/Room/Floor Protection/Room.

Sensor Type: B3950-10K/B3380-10K/B3700-10K/B3600-12K/B3450-15K

Floor Sensor Calibration: Measure the temperature by adjusting the calibration. ±9°

Room Sensor Calibration: Measure the temperature by adjusting the calibration. ±9°



Floor Protection: Floor protection is enabled only when the sensor type is selected for room and floor simultaneously.

Reference value: Laminate-max.28°C(82.4°F)/Tile-max.40°C (104°F) The value ranges from 20°C(68°F)to 50°C(122°F).

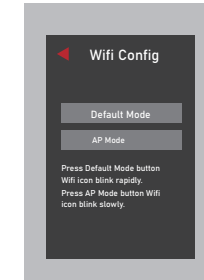
Location: Home/Office.

Factory Reset: This will reset the thermostat to factory settings, Personal settings will be lost.

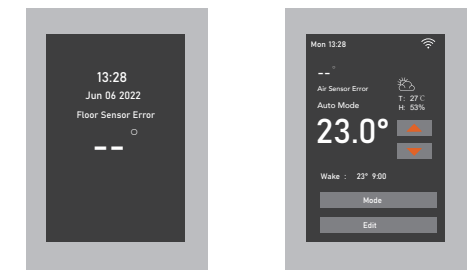
Wifi Config

Provides two modes for wifi connection:

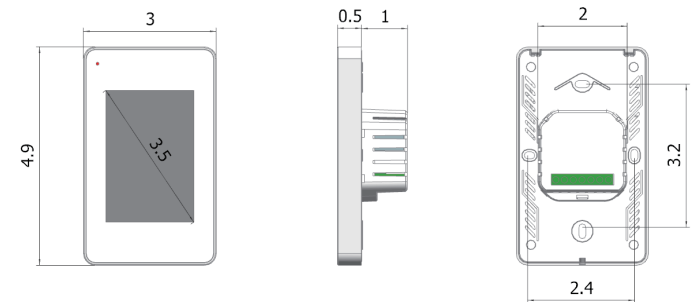
Note: If you already have your device connected to WiFi, you can reset it here.



Room/Floor sensor failure alarm:



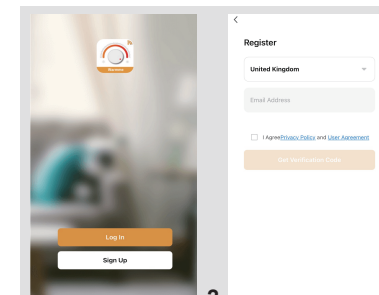
● Dimensions (inches)



● Wifi connection

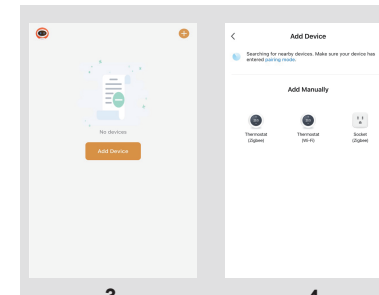


Step 1: Scan the QR code or download the Warmme from APP store/Google browser.



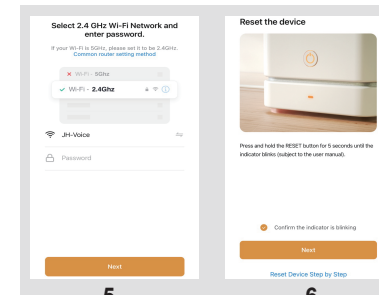
Step 2: Register and log in with mobile number/email address in the APP.

Attention: Please read and agree 'Privacy Policy and Service agreement' before registration.



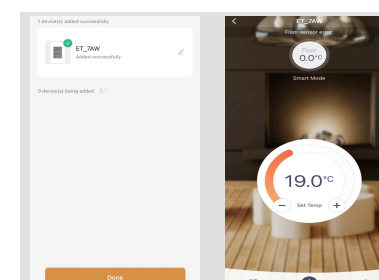
Step 3: Make sure the thermostat wifi is blinking.Click 'Add Device' or '+' on the top-right to add device.

Step 4: Click 'Thermostat (Wi-Fi)'. You need to enable Bluetooth and give the APP permission.The APP will actively discover the device.



Step 5: Enter Wifi password, and click "Next".You can choose 2.4/5G network according to your needs.

Step 6: This step is to ensure that the wifi of the thermostat blinks. If yes, click "Next" skip this step.



Step 7: If device added successfully, you can change the device the device name and set region, then click "Done".

Step 8: You can enjoy remote control. Check the real-time temperature and set temperature ect.And adjust the Settings.