

# Installation Instructions

## Concealed Cable Kit

### WARNING

Please read these instructions carefully. **Warmtech Heating Systems** cannot be held responsible if the installation and use of the towel rail is not carried out in accordance with the instructions given below or for materials not supplied by **Warmtech Heating Systems**.

### SAFETY INFORMATION

The towel rail is not intended for use by young children or infirm persons without supervision. Young children should be supervised to ensure that they do not play with the appliance. The towel rail has been designed to withstand the loads expected during normal operation as a towel rail. The towel rail is not a ladder and should not be used as such.

### ELECTRICAL CONNECTIONS

The towel rail must be wired by a registered electrician. An isolating switch must be positioned near the towel rail. If the supply cord is damaged the entire towel rail must be returned to **Warmtech Heating Systems**.

### WALL MOUNTING

The towel rail is designed to be fixed through wall cladding into solid timber framing, brick or masonry walls. Plasterboard toggles, of at least 3mm diameter, may be used for 2 of the towel rail fixings.

### FITTINGS CHECKLIST



1 50mm woodscrews x4



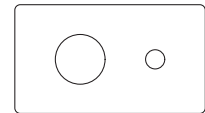
2 Grub screws x4



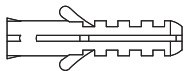
3 Spare fixing screw for bottom leg x1



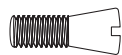
4 Spare fixing screws for top leg x2



5 Template for tile fixing x1



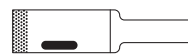
6 Wall plugs x4



7 Wall anchor x1



8 6mm diamond drill bit x1



9 14mm diamond drill bit x1



10 Wall anchor sleeve x1



11 Allen key x1



12 Mushrooms x3 + Mushroom for exposed wire x1

### WARNING

In order to avoid a hazard for very young children, this appliance should be installed so that the heated rail is at least 600mm above the floor. Do not overload the transformer provided.

# Installation Instructions CONTINUED

## Concealed / Exposed Cord Entry

### CONCEALED CORD ENTRY – TO BE USED WHERE NO EXISTING OUTLET IS PRESENT



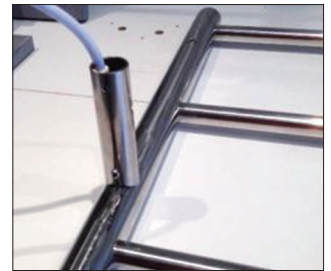
**1** Mount the concealed cable mushroom onto the wall. Decide whether left or right handed.



**2** If right-handed, remove the cap and plug from the right hand side.



**3** Position the cap on the power cord plug.

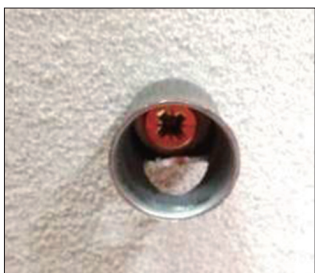


**4** Remove the screw and pass the power cord through the leg. Plug the power cord into the towel rail and tighten the cord to the rail. Slide the leg over the power cord and fix the screw.

**5** Fit the other three legs and feed the power cord through the concealed cable mushroom mounted on the wall.

**6** Mount the towel rail on the wall and tighten the grub screws on all 4 legs.

### EXPOSED CORD ENTRY – TO BE USED WHERE AN EXISTING PERMANENT CONNECTION OUTLET IS ALREADY WIRED



**1** Select the mushroom with the hole and mount it on the wall.



**2** Select the leg with the cutaway and feed the cable through the leg.



**3** Tighten the screw to the leg of the towel rail. Fit the other 3 legs to the towel rail.



**4** Feed the cable through the hole in the mushroom.

**5** Mount the towel rail on the wall and tighten the grub screws on all 4 legs.