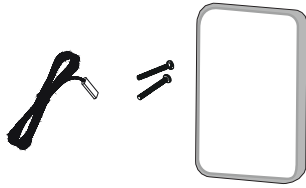


1 Supplied Parts

- ▶ One (1) thermostat
- ▶ Two (2) screws
- ▶ One (1) floor sensor
- ▶ One (1) screwdriver

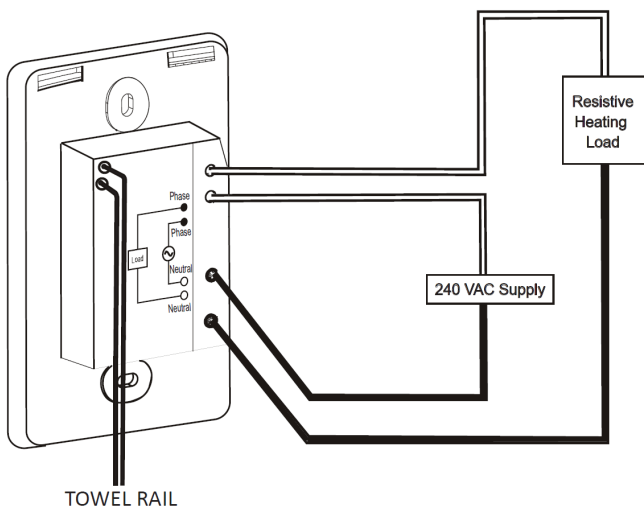
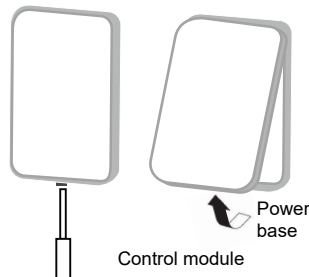


2 Installation Guidelines

- ▶ Turn off power to the heating system at the main electrical panel to avoid electrical shock. Installation should be carried out by a registered electrician.
- ▶ High voltage thermostats must be installed onto an electrical box.
- ▶ For a new installation, choose a location about 1.5m (5 ft) above the floor.
- ▶ The thermostat must be installed facing the heating system.
- ▶ The thermostat must be installed on an inside wall.
- ▶ Avoid locations where there are air drafts (top of staircase, air outlet), dead air spots (behind a door), direct sunlight or concealed chimneys or stove pipes.

3 Installation

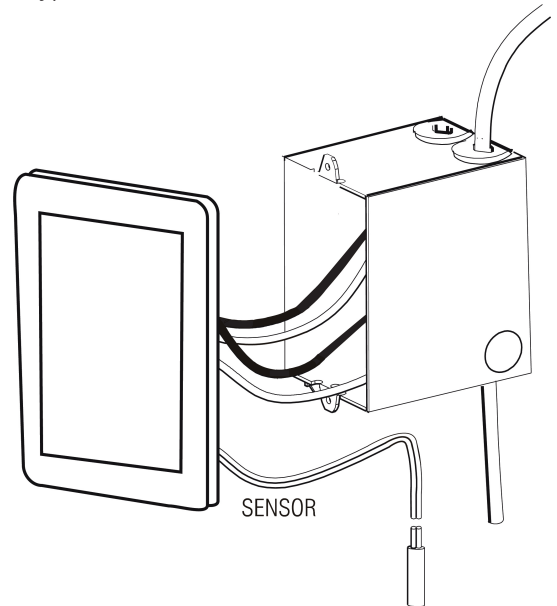
1. Turn the heating system off at the main electrical panel.
2. Loosen the bottom screw and remove the thermostat's control module from its power base (the screw cannot be completely removed).
3. Connect the thermostat to the load and power supply.



4. To connect the floor sensor for floor heating, see section 4.
5. If you wish to connect a towel rail, see section 4.
6. Install the power base to the electrical box using the provided screws.
7. Set the control module back on the power base and tighten the bottom screw.
8. Return power to the heating system at the main electrical panel.

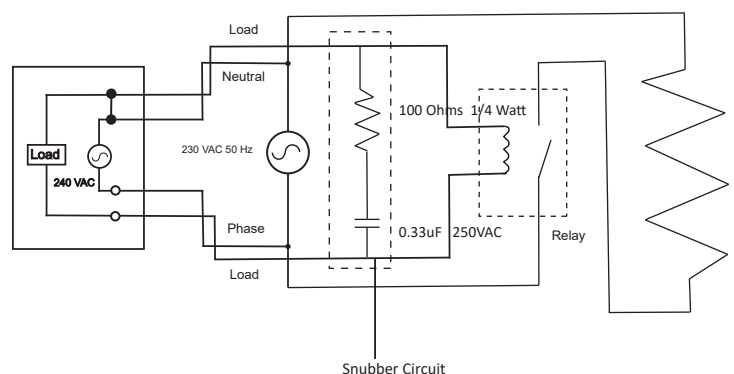
4 Connecting the floor sensor/towel rail

1. Insert the floor sensor cable through one of the two openings on the power base and connect the sensor wires to terminals 3 and 4 (no polarity).
 - ▶ The sensor wires must not come in contact with the electrical wires and must be routed outside the electrical box and follow the wall down the floor.
 - ▶ Position the sensor cable such that it does not come in contact with the floor heating wires. The sensor must be centred between two floor heating wires for best temperature control.
 - ▶ DO NOT staple the sensor head (the plastic end) to the floor. Doing so might damage the sensor. Any damage might not be noticeable during testing, but can become apparent several days later.
2. If you wish to connect a towel rail, insert (use 18-22 gauge flexible wires) to terminal (polarity) back of the power base and connect them to the terminals (no polarity).



SNUBBER installation

For the best protection of the thermostat and for multiple contactors, connect the SNUBBER in parallel across the terminals of each contactor coil. Alternatively for a single contactor application, it can be connected across the two thermostat load wires (between the output wires) that are connected to the contactor coil. See diagram below:



Note: Use a 240VAC coil relay